

Capital Select Sale

La vente Capital Select

Friday, March 2, 2012

At the Ayrshire Canada AGM
Master Breeders' Banquet
Lord Elgin Hotel, Ottawa, ON

Vendredi le 2 mars 2012

À l'AGA Ayrshire Canada lors du
Banquet des Maîtres Éleveurs
Lord Elgin Hotel, Ottawa, ON

5 TOP CONSIGNMENTS - 5 CONSIGNATIONS EXTRA

La vidéo des consignations sera en ligne sur www.ayrshire-canada.com le jeudi 1^{er} mars 2012!

Videos of the consignments will be on-line at www.ayrshire-canada.com on Thursday, March 1st!

Lagacé - Junior Yearling (Poker)

De la Plaine - Summer Yearling (Poker)

Selwood - Summer Yearling (Calimero)

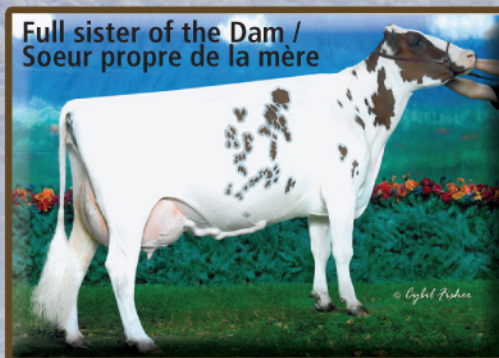


Lachute Road BBC Blanche 3 ET, EX 2E
Sire / Père : Coronation

De la Plaine Wilton Pixou EX-2E-93
4 Yrs Old - 4 Calves! / 4 ans - 4 veaux!

Ayr Bay J Judy, EX - 7E 1*
Dam / Mère : EX Poker

Lashburn
Senior Calf
x Burdette



Royale Divide BBK Greta EX 92
Dam / Mère : VG Kellogg



Rosayre BB Jannah, VG-87
Dam / Mère : VG-86 Conn

Rosayre
Int. Calf
x Burdette

Info / catalogues : Yves Charpentier Cell. : 819 314-3750 Auctioneer / Encanteur : André Richard 418 894-2999
Steve MacDonald (US) : 309 712-5969 • Dave Bergeron : 613 808-6767 • Norman Boswall : 613 422-5444 • Jonathan Lemay : 418 580-6208
Sale Manager / Gérant de la vente : **KEN ROSE 613 774-2595**



FEMALE/FEMELLE

AYRSHIRE CANADA

ROSAYRE BURDETTE'S JASSABELLE

-11259462- PUREBRED

BT NO./TS NO.:

TATTOO:

BORN/NÉE: December 05, 2011

BREEDER/ÉLEVEUR: Ken & Shirley Rose, Mountain, ON 613-774-2595

OWNER/PROP: Ken & Shirley Rose, Mountain, ON 613-774-2595

INTERMEDIATE CALF/GÉNISSE INTERMÉDIAIRE

SIRE/PÈRE:

PALMYRA TRI-STAR BURDETTE-ET -AYUSAM 100419568-

MACE: (12/11) +649M/L, +19F/G,-0.09% +26P,+0.05% RPT.80%
TYPE:(12/11)CONF +12(MACE)(63% RPT) LPI/IPV: +1639(MACE) RK/RG:..
SCS: 2.71(MACE), Inbr.C: 9.08%, R.Val: 12%, Dtr Fert: 106(MACE)
10 prog class 5 VG/TB, 4 GP/BP, 1 F, GP+/BP+ 90%

PALMYRA TRI-STAR -AYUSAM 150440-

MACE: (12/11) +543M/L, +19F/G,-0.04% +17P,-0.02% RPT.83%
TYPE:(12/11)CONF +8(MACE)(72% RPT) LPI/IPV: +996(MACE) RK/RG:..
SCS: 2.84(MACE), Inbr.C: 10.07%, R.Val: 12%, Dtr Fert: 98(MACE)
1 prog class 1 VG/TB, GP+/BP+ 100%

DAMMÈRE:

ROSAYRE CONN'S JASPER -7718192- VG 86 (4-9)

2 11 305 11385 540 4.7 383 3.4 (345 394 351) +65 +116 +66
4 6 305 16446 766 4.7 527 3.2 (439 497 428) +157 +214 +148
(2 LACT)TOTAL: 39741M/L, 1901F/G,4.78% 1389P,3.50%
AVG. BCA/ MCR MOY.:392- 446- 390P +111 +165 +107
EBV/VEE: (12/11) +732M/L, +45F/G,+0.22% +25P,+0.00% RPT.53%
TYPE:(12/11)CONF +6(42% RPT) LPI/IPV: +1337 RK/RG: 91%
SCS: 3.07, Inbr.C: 8.38%, R.Val: 16%, Dtr Fert: 99(PA)

PALMYRA RENO BETHANY -ET -AYUSAF 100101191- 3*

MACE: (12/11) +1020M/L, +27F/G,-0.18% +33P,-0.02% RPT.66%
TYPE:(12/11)CONF +8(MACE)(55% RPT) LPI/IPV: +1309(MACE) RK/RG..
SCS: 2.98(MACE), Inbr.C: 7.40%, R.Val: 12%, Dtr Fert: 102(PA)

SHADY WALNUT CONN -10304939- EX 90 (3-9)

EBV/VEE: (12/11) +296M/L, +36F/G,+0.33% +13P,+0.04% RPT.98%
TYPE:(12/11)CONF +3(97% RPT) LPI/IPV: +644 RK/RG: 47%
SCS: 3.09, Inbr.C: 5.60%, R.Val: 16%, Dtr Fert: 98
877 prog class 14 EX, 149 VG/TB, 414 GP/BP, 281 G/B,
18 F, 1 P, GP+/BP+ 66%

ROSAYRE BB JANNAH -8447178- VG 87 (2-10)

3 3 305 10357 468 4.5 348 3.4 (295 321 303) +44 +83 +50
4 3 305 13375 580 4.3 429 3.2 (354 372 346) +89 +107 +81
5 5 305 13179 560 4.2 441 3.3 (324 339 329) +39 +56 +44
(5 LACT)TOTAL: 56363M/L, 2366F/G,4.20% 1873P,3.32%
AVG. BCA/ MCR MOY.:323- 333- 324P +60 +77 +60
EBV/VEE: (12/11) +692M/L, +21F/G,-0.08% +20P,-0.04% RPT.58%
TYPE:(12/11)CONF +8(43% RPT) LPI/IPV: +1157 RK/RG: 86%
SCS: 3.24, Inbr.C: 6.48%, R.Val: 16%, Dtr Fert: 100(PA)

Linda Ness
Executive Secretary
February 03, 2012



FEMALE/FEMELLE

AYRSHIRE CANADA

LASHBURN BURDETTE GWEN
-107272095- PUREBRED

PA: (12/11) +160M/L, +3F/G, -0.04% +12P, +0.08% RPT.30%
TYPE:(12/11)CONF +11(PA)(25% RPT) LPI/IPV: +973(PA) RK/RG: 79%
SCS: 2.91(PA), Inbr.C: 8.32%, R.Val: 13%, Dtr Fert: 101(PA)

BT NO./TS NO.:

TATTOO:

BORN/NÉE: September 03, 2011

BREEDER/ÉLEVEUR: McCaig's & Marlin Palich, Ormstown, QC

OWNER/PROP: McCaig's & Marlin Palich, Ormstown, QC

SENIOR CALF/GÉNISSE SENIOR

SIRE/PÈRE:

PALMYRA TRI-STAR BURDETTE-ET -AYUSAM 100419568-

MACE: (12/11) +649M/L, +19F/G, -0.09% +26P, +0.05% RPT.80%
TYPE:(12/11)CONF +12(MACE)(63% RPT) LPI/IPV: +1639(MACE) RK/RG:..
SCS: 2.71(MACE), Inbr.C: 9.08%, R.Val: 12%, Dtr Fert: 106(MACE)
10 prog class 5 VG/TB, 4 GP/BP, 1 F, GP+/BP+ 90%

PALMYRA TRI-STAR -AYUSAM 150440-

MACE: (12/11) +543M/L, +19F/G, -0.04% +17P, -0.02% RPT.83%
TYPE:(12/11)CONF +8(MACE)(72% RPT) LPI/IPV: +996(MACE) RK/RG:..
SCS: 2.84(MACE), Inbr.C: 10.07%, R.Val: 12%, Dtr Fert: 98(MACE)
1 prog class 1 VG/TB, GP+/BP+ 100%

DAMMÈRE:

P&A BBBK GABBY-ET -AYUSAF 66524132- VG 85 (2-8)

PA: (12/11) -330M/L, -13F/G, +0.01% -3P, +0.11% RPT.38%
TYPE:(12/11)CONF +10(PA)(35% RPT) LPI/IPV: +307(PA) RK/RG: 36%
SCS: 3.10(PA), Inbr.C: 9.40%, R.Val: 15%, Dtr Fert: 96(PA)

PALMYRA RENO BETHANY -ET -AYUSAF 100101191- 3*

MACE: (12/11) +1020M/L, +27F/G, -0.18% +33P, -0.02% RPT.66%
TYPE:(12/11)CONF +8(MACE)(55% RPT) LPI/IPV: +1309(MACE) RK/RG:..
SCS: 2.98(MACE), Inbr.C: 7.40%, R.Val: 12%, Dtr Fert: 102(PA)

BLACKADDAR B B KELLOGG -777850- EX 90 (3-4)+ELITE+

EBV/VEE: (12/11) -522M/L, -28F/G, -0.11% -8P, +0.13% RPT.99%
TYPE:(12/11)CONF +13(97% RPT) LPI/IPV: +343 RK/RG: 30%
SCS: 3.22, Inbr.C: 3.70%, R.Val: 18%, Dtr Fert: 95
1526 prog class 237 EX, 599 VG/TB, 540 GP/BP, 135 G/B,
11 F, 4 P, GP+/BP+ 90%

ROYALE-DIVINE TRIDENT GARBO -AYUSAF 100259438-

MACE: (12/11) -138M/L, +3F/G, +0.12% +2P, +0.09% RPT.52%
TYPE:(12/11)CONF +7(MACE)(42% RPT) LPI/IPV: +270(MACE) RK/RG:..
SCS: 2.98(MACE), Inbr.C: 4.50%, R.Val: 12%, Dtr Fert: 97(PA)

Linda Ness
Executive Secretary
February 03, 2012



FEMALE/FEMELLE

AYRSHIRE CANADA

LAGACE POKER BIANNA

-106261749- PUREBRED

PA: (12/11) +491M/L, +14F/G,-0.09% +8P,-0.13% RPT.39%
TYPE:(12/11)CONF +13(PA)(36% RPT) LPI/IPV: +1129(PA) RK/RG: ..
SCS: 3.13(PA), Inbr.C: 9.71%, R.Val: 17%, Dtr Fert: 100(PA)

BT NO./TS NO.:

TATTOO:

BORN/NÉE: April 04, 2011

BREEDER/ÉLEVEUR: Ferme Lagacé et Fils, St Hyacinthe, QC 450-799-1176

OWNER/PROP: Ferme Lagacé et Fils, St Hyacinthe, QC 450-799-1176

JUNIOR YEARLING/UN AN JUNIOR

SIRE/PÈRE:

DES CHAMOIS POKER -ET -8401621- VG 86 (2-0)+ELITE+

EBV/VEE: (12/11) +607M/L, +32F/G,+0.10% +19P,-0.02% RPT.98%
TYPE:(12/11)CONF +14(97% RPT) LPI/IPV: +1769 RK/RG: 93%
SCS: 2.87, Inbr.C: 7.60%, R.Val: 20%, Dtr Fert: 98
894 prog class 5 EX, 156 VG/TB, 541 GP/BP, 185 G/B,
7 F, GP+/BP+ 79%

WOODLAND VIEW PARDNER ET -811799- EX 96-2E (5-11)+E+

EBV/VEE: (12/11) +535M/L, +29F/G,+0.11% +14P,-0.06% RPT.99%
TYPE:(12/11)CONF +3(98% RPT) LPI/IPV: +831 RK/RG: 56%
SCS: 2.81, Inbr.C: 5.29%, R.Val: 21%, Dtr Fert: 99
2059 prog class 46 EX, 382 VG/TB, 873 GP/BP, 646 G/B,
97 F, 15 P, GP+/BP+ 63%

DAMMÈRE:

LAGACE SYLVESTER BIANCA -ET -103358575- VG 86 (2-2)

2 0 305 7965 286 3.6 244 3.1 (277 238 257) +26 -13 +2
3 1 305 8416 326 3.9 262 3.1 (248 233 234) +11 -10 -13
4 2 296 9027 333 3.7 276 3.1 (246 220 228) +6 -26 -18
5 2 242 7995 308 3.9 248 3.1 (208 196 195) Projected
(4 LACT)TOTAL: 32699M/L, 1222F/G,3.74% 1003P,3.07%
AVG. BCA/ MCR MOY.:257- 230- 240P +14 -16 -10
EBV/VEE: (12/11) +375M/L, -5F/G,-0.28% -4P,-0.24% RPT.59%
TYPE:(12/11)CONF +11(46% RPT) LPI/IPV: +489 RK/RG: 49%
SCS: 3.38, Inbr.C: 9.29%, R.Val: 13%, Dtr Fert: 101(PA)

MARILIE B B POLKIE ET -10014952- EX 95-5E (11-2)4*

6 10 305 11079 431 3.9 370 3.3 (287 276 291)
8 5 305 12358 598 4.8 402 3.3 (296 358 291)
(7 LACT)TOTAL: 87492M/L, 3814F/G,4.36% 3106P,3.55%
AVG. BCA/ MCR MOY.:270- 282- 281P +20 +22 +28
EBV/VEE: (12/11) +54M/L, +4F/G,+0.03% +7P,+0.08% RPT.79%
TYPE:(12/11)CONF +12(65% RPT) LPI/IPV: +887 RK/RG: 74%
SCS: 3.18, Inbr.C: 4.20%, R.Val: 15%, Dtr Fert: 98(PA)

EMBRYO-STAR SYLVESTER ET -823041- EX 92 (2-7)+ELITE+

EBV/VEE: (12/11) +231M/L, -12F/G,-0.30% +0P,-0.11% RPT.98%
TYPE:(12/11)CONF +10(95% RPT) LPI/IPV: +283 RK/RG: 28%
SCS: 3.55, Inbr.C: 5.06%, R.Val: 15%, Dtr Fert: 100
429 prog class 21 EX, 141 VG/TB, 176 GP/BP, 82 G/B,
8 F, 1 P, GP+/BP+ 79%

LACHUTE ROAD BBC BLANCHE 3 ET -814011- EX 90-2E (7-9)8*

4 0 305 10401 397 3.8 336 3.2 (281 263 275) +64 +46 +50
5 4 305 8962 342 3.8 290 3.2 (240 224 236) +12 -4 -1
7 6 305 9890 467 4.7 307 3.1 (250 288 236) +29 +76 +13
(5 LACT)TOTAL: 49057M/L, 2011F/G,4.10% 1562P,3.18%
AVG. BCA/ MCR MOY.:248- 247- 236P +24 +26 +7
EBV/VEE: (12/11) +136M/L, +6F/G,+0.01% -6P,-0.17% RPT.79%
TYPE:(12/11)CONF +5(64% RPT) LPI/IPV: +447 RK/RG: 46%
SCS: 3.07, Inbr.C: 7.06%, R.Val: 12%, Dtr Fert: 102(PA)

Linda Ness
Executive Secretary
February 03, 2012



FEMALE/FEMELLE

AYRSHIRE CANADA

AYR BAY CALIMERO JUDY -ET

-11333385- PUREBRED

BT NO./TS NO.:

TATTOO:

BORN/NÉE: June 04, 2011

BREEDER/ÉLEVEUR: Ayr Bay Farms, St-Peters Bay, PE 902-961-2305

OWNER/PROP: Robert Tolhurst, Vankleek Hill, ON 613-678-3345

SUMMER YEARLING/UN AN À L'ÉTÉ

SIRE/PÈRE:

MARGOT CALIMERO -10310847- VG 85 (2-3)

EBV/VEE: (12/11) +159M/L, +17F/G, +0.14% +10P, +0.07% RPT.99%

TYPE:(12/11)CONF +13(98% RPT) LPI/IPV: +1433 RK/RG: 82%

SCS: 3.03, Inbr.C: 2.05%, R.Val: 11%, Dtr Fert: 106

1012 prog class 22 EX, 233 VG/TB, 498 GP/BP, 233 G/B,

24 F, 2 P, GP+/BP+ 74%

ARDROSSAN EV KATES TRIDENT -AYUSAM 144136- +ELITE+

EBV/VEE: (12/11) +201M/L, +18F/G, +0.14% +12P, +0.07% RPT.98%

TYPE:(12/11)CONF +8(95% RPT) LPI/IPV: +747 RK/RG: 53%

SCS: 3.15, Inbr.C: 3.50%, R.Val: 12%, Dtr Fert: 96

606 prog class 31 EX, 142 VG/TB, 282 GP/BP, 127 G/B,

18 F, 6 P, GP+/BP+ 75%

DAMMÈRE:

AYR BAY RUDY -ET -7510487- EX 90 (5-2)

2 8 305 6678 296 4.4 222 3.3 (215 229 218) +22 +32 +21

4 0 290 6136 251 4.1 205 3.3 (162 162 164) -24 -20 -28

5 0 305 9426 340 3.6 317 3.4 (235 210 240)

6 7 117 9673 378 3.9 321 3.3 (254 244 257) Projected

(4 LACT)TOTAL: 28844M/L, 1154F/G, 4.00% 974P, 3.38%

AVG. BCA/ MCR MOY.: 204- 200- 207P -1 +4 -2

EBV/VEE: (12/11) -416M/L, -14F/G, +0.03% -12P, +0.02% RPT.58%

TYPE:(12/11)CONF +10(45% RPT) LPI/IPV: +234 RK/RG: 31%

SCS: 3.01, Inbr.C: 9.41%, R.Val: 14%, Dtr Fert: 98(PA)

MARGOT COOKIE S -10002523- EX 91-2E (6-9)6*

4 4 305 10980 451 4.1 361 3.3 (287 289 287) +82 +98 +76

6 5 305 10547 610 5.8 346 3.3 (261 372 260) +55 +174 +50

(6 LACT)TOTAL: 52894M/L, 2279F/G, 4.31% 1771P, 3.35%

AVG. BCA/ MCR MOY.: 264- 278- 267P +60 +86 +58

EBV/VEE: (12/11) +551M/L, +22F/G, +0.01% +17P, -0.01% RPT.82%

TYPE:(12/11)CONF +6(66% RPT) LPI/IPV: +1358 RK/RG: 92%

SCS: 2.94, Inbr.C: 0.00%, R.Val: 8%, Dtr Fert: 108(PA)

BLACKADDAR B B KELLOGG -777850- EX 90 (3-4)+ELITE+

EBV/VEE: (12/11) -522M/L, -28F/G, -0.11% -8P, +0.13% RPT.99%

TYPE:(12/11)CONF +13(97% RPT) LPI/IPV: +343 RK/RG: 30%

SCS: 3.22, Inbr.C: 3.70%, R.Val: 18%, Dtr Fert: 95

1526 prog class 237 EX, 599 VG/TB, 540 GP/BP, 135 G/B,

11 F, 4 P, GP+/BP+ 90%

AYR BAY J JUDY -804709- EX 90-7E (12-6)1*

7 3 305 9077 409 4.5 294 3.2 (236 262 233) +58 +86 +52

8 7 305 8472 357 4.2 272 3.2 (203 214 199) +30 +45 +23

12 3 305 10207 449 4.4 322 3.2 (282 312 271) +81 +118 +69

(9 LACT)TOTAL: 81166M/L, 3544F/G, 4.37% 2695P, 3.32%

AVG. BCA/ MCR MOY.: 219- 238- 215P +38 +59 +31

EBV/VEE: (12/11) -251M/L, +4F/G, +0.20% -8P, -0.02% RPT.72%

TYPE:(12/11)CONF +4(49% RPT) LPI/IPV: +207 RK/RG: 30%

SCS: 2.97, Inbr.C: 4.45%, R.Val: 11%, Dtr Fert: 101(PA)

Linda Ness
Executive Secretary
February 03, 2012



FEMALE/FEMELLE

AYRSHIRE CANADA

DE LA PLAINE POKER PIROU

-107228633- PUREBRED

PA: (12/11) +464M/L, +23F/G,+0.06% +19P,+0.04% RPT.39%
 TYPE:(12/11)CONF +10(PA)(35% RPT) LPI/IPV: +1375(PA) RK/RG: ..
 SCS: 2.98(PA), Inbr.C: 12.89%, R.Val: 18%, Dtr Fert: 98(PA)

BT NO./TS NO.:

TATTOO:

BORN/NÉE: July 03, 2011

BREEDER/ÉLEVEUR: Ferme De La Plaine, Ste-Françoise Lotbinière, QC 819-287-5996

OWNER/PROP: Ferme De La Plaine, Ste-Françoise Lotbinière, QC 819-287-5996

SUMMER YEARLING/UN AN À L'ÉTÉ

SIRE/PÈRE:

DES CHAMOIS POKER -ET -8401621- VG 86 (2-0)+ELITE+

EBV/VEE: (12/11) +607M/L, +32F/G,+0.10% +19P,-0.02% RPT.98%
 TYPE:(12/11)CONF +14(97% RPT) LPI/IPV: +1769 RK/RG: 93%
 SCS: 2.87, Inbr.C: 7.60%, R.Val: 20%, Dtr Fert: 98
 894 prog class 5 EX, 156 VG/TB, 541 GP/BP, 185 G/B,
 7 F, GP+/BP+ 79%

WOODLAND VIEW PARDNER ET -811799- EX 96-2E (5-11)+E+

EBV/VEE: (12/11) +535M/L, +29F/G,+0.11% +14P,-0.06% RPT.99%
 TYPE:(12/11)CONF +3(98% RPT) LPI/IPV: +831 RK/RG: 56%
 SCS: 2.81, Inbr.C: 5.29%, R.Val: 21%, Dtr Fert: 99
 2059 prog class 46 EX, 382 VG/TB, 873 GP/BP, 646 G/B,
 97 F, 15 P, GP+/BP+ 63%

DAMMÈRE:

DE LA PLAINE WILTON PIXOU -104151855- EX 93-2E (4-11)

1	11	286	7101	286	4.0	259	3.6	(246 237 272)	+10	+4	+23
2	11	305	8188	340	4.2	291	3.6	(248 248 267)	+1	+5	+8
3	9	305	8332	386	4.6	314	3.8	(241 272 275)	+1	+39	+28
4	8	165	10886	421	3.9	388	3.6	(299 281 323)	Projected		

(4 LACT)TOTAL: 30561M/L, 1280F/G,4.19% 1099P,3.60%
 AVG. BCA/ MCR MOY.:245- 252- 271P +4 +16 +20
 EBV/VEE: (12/11) +321M/L, +14F/G,+0.02% +18P,+0.10% RPT.56%
 TYPE:(12/11)CONF +6(44% RPT) LPI/IPV: +981 RK/RG: 79%
 SCS: 3.09, Inbr.C: 5.68%, R.Val: 15%, Dtr Fert: 97(PA)
 Nom. Toute Canadienne 2 ans Senior 2009

MARILIE B B POLKIE ET -10014952- EX 95-5E (11-2)4*

6	10	305	11079	431	3.9	370	3.3	(287 276 291)			
8	5	305	12358	598	4.8	402	3.3	(296 358 291)			

(7 LACT)TOTAL: 87492M/L, 3814F/G,4.36% 3106P,3.55%
 AVG. BCA/ MCR MOY.:270- 282- 281P +20 +22 +28
 EBV/VEE: (12/11) +54M/L, +4F/G,+0.03% +7P,+0.08% RPT.79%
 TYPE:(12/11)CONF +12(65% RPT) LPI/IPV: +887 RK/RG: 74%
 SCS: 3.18, Inbr.C: 4.20%, R.Val: 15%, Dtr Fert: 98(PA)

LABRIE WILTON -ET -10304106- VG 85 (1-7)

EBV/VEE: (12/11) -82M/L, -19F/G,-0.23% +8P,+0.15% RPT.98%
 TYPE:(12/11)CONF +8(97% RPT) LPI/IPV: -193 RK/RG: 7%
 SCS: 3.30, Inbr.C: 3.57%, R.Val: 14%, Dtr Fert: 90
 786 prog class 20 EX, 138 VG/TB, 391 GP/BP, 220 G/B,
 16 F, 1 P, GP+/BP+ 70%

DE LA PLAINE PERCEVAL PIXEL -102679797- EX 90-2E (6-2)

3	1	305	9273	370	4.0	309	3.3	(276 264 278)	+45	+40	+39
4	2	295	8519	360	4.2	300	3.5	(226 230 242)	-7	-1	-5
5	1	303	10055	419	4.2	312	3.1	(256 259 242)	+9	+16	-17

(6 LACT)TOTAL: 46591M/L, 1919F/G,4.12% 1534P,3.29%
 AVG. BCA/ MCR MOY.:238- 234- 240P +2 +3 -6
 EBV/VEE: (12/11) +444M/L, +28F/G,+0.14% +13P,-0.03% RPT.58%
 TYPE:(12/11)CONF +1(51% RPT) LPI/IPV: +1134 RK/RG: 85%
 SCS: 2.92, Inbr.C: 10.35%, R.Val: 16%, Dtr Fert: 104(PA)

Linda Ness
 Executive Secretary
 February 03, 2012



Capital Select Sale

La vente Capital Select

Friday, March 2, 2012

At the Ayrshire Canada AGM
Master Breeders' Banquet
Lord Elgin Hotel, Ottawa, ON

Vendredi le 2 mars 2012

À l'AGA Ayrshire Canada lors du
Banquet des Maîtres Éleveurs
Lord Elgin Hotel, Ottawa, ON

5 TOP CONSIGNMENTS - 5 CONSIGNATIONS EXTRA

La vidéo des consignations sera en ligne sur www.ayrshire-canada.com le jeudi 1^{er} mars 2012!
Videos of the consignments will be on-line at www.ayrshire-canada.com on Thursday, March 1st!

Info / catalogues : Yves Charpentier Cell. : 819 314-3750
Auctioneer / Encanteur : André Richard 418 894-2999

Steve MacDonald (US) : 309 712-5969 • Dave Bergeron : 613 808-6767

Norman Boswall : 613 422-5444 • Jonathan Lemay : 418 580-6208

Sale Manager / Gérant de la vente :
KEN ROSE 613 774-2595